



Department of Public Works  
**Engineering Division**  
Robert F. Phillips, P.E., City Engineer

City-County Building, Room 115  
210 Martin Luther King, Jr. Boulevard  
Madison, Wisconsin 53703  
Phone: (608) 266-4751  
Fax: (608) 264-9275  
[engineering@cityofmadison.com](mailto:engineering@cityofmadison.com)  
[www.cityofmadison.com/engineering](http://www.cityofmadison.com/engineering)

**Assistant City Engineer**  
Michael R. Dailey, P.E.

**Principal Engineers**  
Christina M. Bachmann, P.E.  
John S. Fahrney, P.E.  
Gregory T. Fries, P.E.  
Christopher J. Petykowski, P.E.

**Facilities & Sustainability**  
Jeanne E. Hoffman, Manager

**Operations Manager**  
Kathleen M. Cryan

**Mapping Section Manager**  
Eric T. Pederson, P.S.

**Financial Manager**  
Steven B. Danner-Rivers

**Hydrogeologist**  
Brynn Bemis

February 17, 2015

## NOTICE OF ADDENDUM -

### ADDENDUM NO. 1 2015 SPRING PARKS DIVISION AND WATER UTILITY LANDSCAPING CONTRACT NO. 7470

Revise and amend the contract document(s) for the above project as stated in this addendum, otherwise, the original document shall remain in effect.

#### Plans

1. The revised plan sheet substitutions below reflect an additional project site (Tenney Park Beach House) added to the contract.
  - **REPLACE:**
    - COVER SHEET dated 2.13.2015 with COVER SHEET dated 2.20.2015 – new cover sheet reflects work to be performed at an additional project site (Tenney Park Beach House)
  - **ADD:**
    - SHEET L9.0 –sheet describes work to be performed at additional project site (Tenney Park Beach House)

#### Special Provisions

1. **REPLACE EXISTING CONTRACT WITH NEW CONTRACT** – the new contract document reflects work to be performed at the additional project site (Tenney Park Beach House)

#### Proposal Page

1. **REPLACE EXISTING PROPOSAL PAGE WITH NEW PROPOSAL PAGE** – the new proposal page reflects work to be performed at the additional project site (Tenny Park Beach House) as well as the addition of RUDBECKIA TOMENTOSA – 50 EA to items 20900-20926.


Please acknowledge this addendum on page E1 of the contract documents and/or in Section E: Bidder's Acknowledgement on Bid Express.

February 17, 2015  
Page 2

Electronic version of these documents can be found on the Bid Express web site at:

<http://www.bidexpress.com>

If you are unable to download plan revisions associated with the addendum, please contact the Engineering office at 608-266-4751 receive the material by another route.



---

Eric Knepp, Parks Superintendent

SHEETS

- L-1 ACEWOOD PARK
- L-2 DROSTER PARK
- L-3 LINDEN GROVE PARK
- L-4 KENNETH NEWVILLE PARK
- L-5 WATER UTILITY WELL 11
- L-6 WATER UTILITY WELL 16
- L-7 WESTMORLAND PARK
- L-8 YAHARA RIVER PARKWAY (YAHARA RIVER AT E.MAIN)
- L-9 TENNEY PARK (BEACH HOUSE)

City of Madison  
 Department of Public Works  
**PARKS DIVISION**

*City-County Building, Suite 104  
 210 Martin Luther King, Jr. Blvd.  
 PO Box 2987  
 Madison, WI 53701-2987*



PROJECT:

*2015 SPRING PARKS  
 DIVISION & WATER  
 UTILITY LANDSCAPING*

**2015 SPRING PARKS DIVISION &  
 WATER UTILITY LANDSCAPING**  
 CITY OF MADISON PARKS DIVISION  
 DEPARTMENT OF PUBLIC WORKS

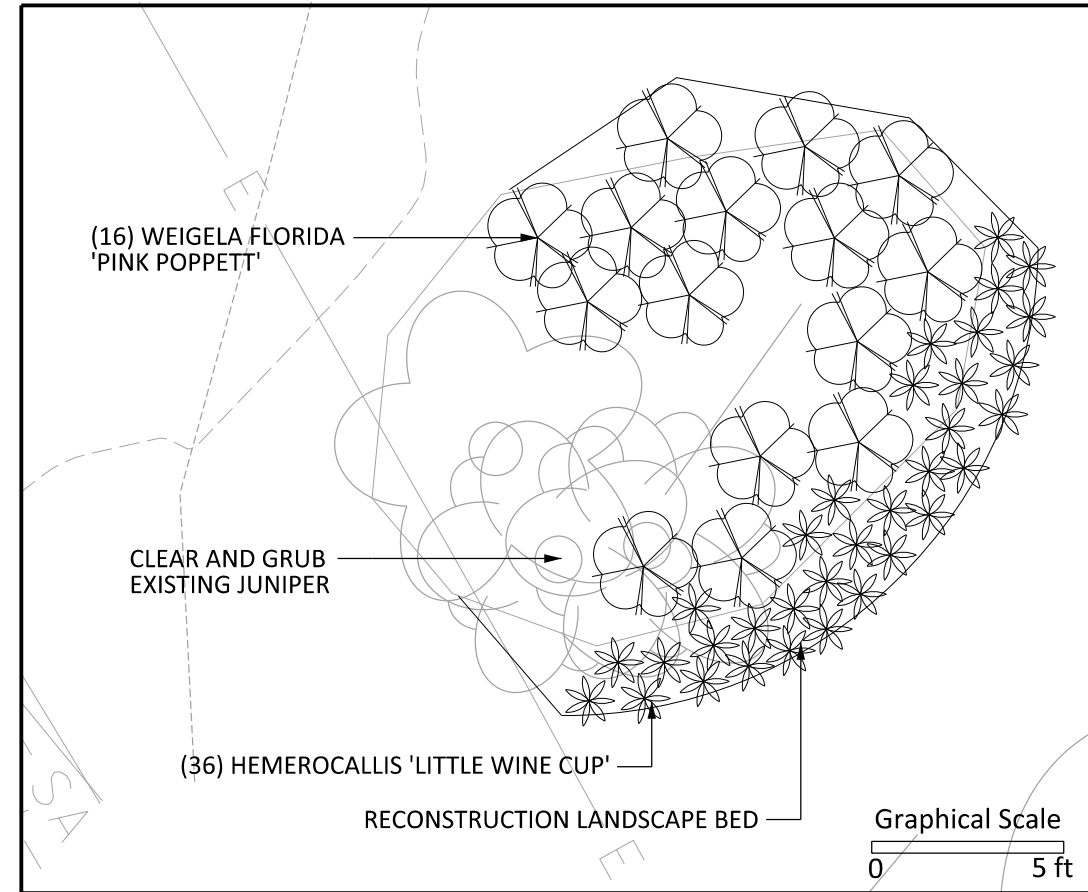
Although every effort has been made in preparing these plans and checking them for accuracy, the contractor and subcontractors must check all details and dimensions of their trade and be responsible for the same.

ITEM	DATE
<i>Drawn by: KK</i>	<i>02-20-2015</i>
<i>Approved by:</i>	<i>xx-xx-xxxx</i>

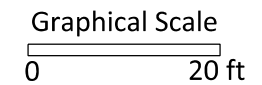
PUBLIC WORKS PROJECT #:  
**7470**

SHEET TITLE:  
**LANDSCAPE PLANS**

SHEET NUMBER:  
**COVER SHEET**



DETAIL 1



City of Madison  
Department of Public Works  
**PARKS DIVISION**

City-County Building, Suite 104  
210 Martin Luther King, Jr. Blvd.  
PO Box 2987  
Madison, WI 53701-2987

*play*  
**MADISON  
PARKS**



PROJECT: **2015 SPRING  
PARKS DIVISION  
AND WATER  
UTILITY  
LANDSCAPING**

**TENNEY PARK  
1414 E JOHNSON  
MADISON, WI 53703**

Although every effort has been made in preparing these plans and checking them for accuracy, the contractor and subcontractors must check all details and dimensions of their trade and be responsible for the same.

ITEM	DATE
Drawn by:	xx-xx-xxxx
Approved by:	xx-xx-xxxx

PUBLIC WORKS PROJECT #:  
**7470**

SHEET TITLE:  
**LANDSCAPE PLAN**

SHEET NUMBER:  
**L-9**